

Alpha Innovations LLC

Installation Instructions:

Changing Times DSF Loading and
Closure System

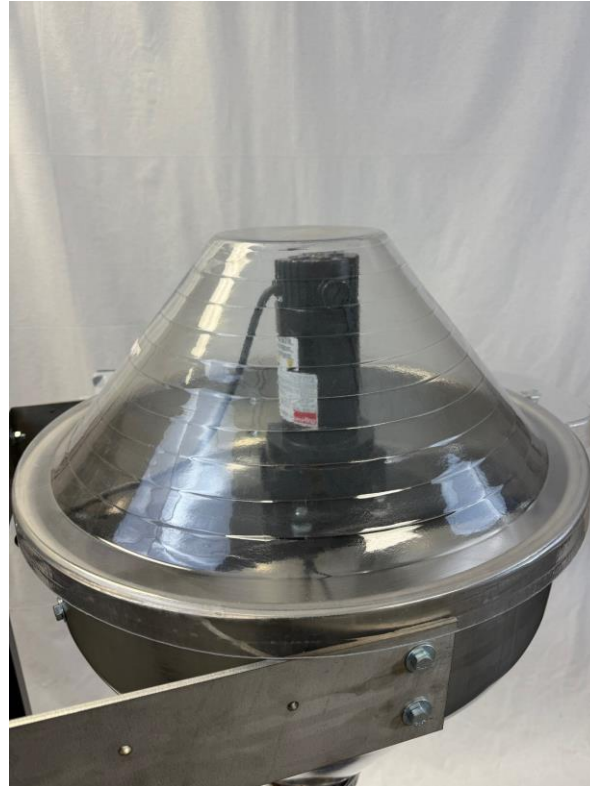
Changing Times Original Cover and the Ai DSF Closure System



You can remove the original clear plastic cover and store this in your plant – this clear cover is being replaced with the Alpha Innovations DSF Loading and Closure System (photo on right)...

The Ai DSF Loading and Closure System supports a low dust loading and handling process that dramatically reduces DSF dust during the product loading and handling part of your Dry Seed Finisher plant processes...

The photo below shows the original clear plastic Changing Times Cover

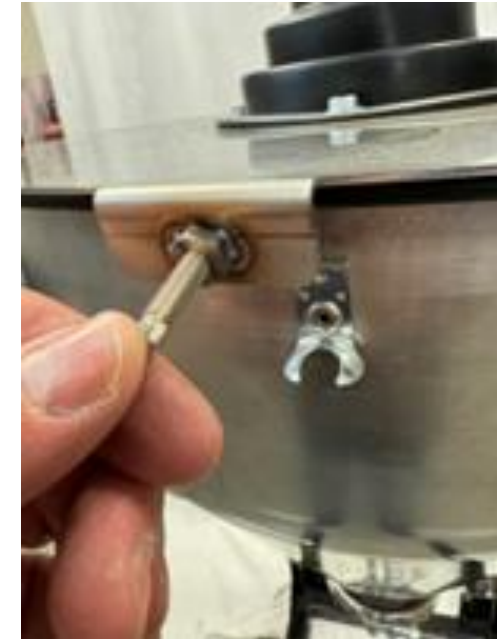


This photo shows a correctly installed Ai DSF Loading and Closure System for the 14-21 gallon Changing Times Dry Applicator



Step 1 – Ai Closure System and Installation Parts

Installation instructions, Rubber Seal, 3.5” Clamp and Thumb Screws



Your Ai Closure System has installation instructions and parts that are found in a clear, sealed bag. Please open and remove the instructions and parts as needed during the installation process...

Step 2: **Install the rubber gasket on the Changing Times DSF lip, creating a gasket to seal this system:**

Start the gasket on the lip



Work the gasket into place on the lip of the dry applicator



Continue this process all the way around the lip of the dry applicator securing the gasket firmly into place



If necessary, trim any excess gasket material to create a finished gasket and seal between the applicator and Closure System



The finished gasket is now in place for the Alpha Innovations DSF Closure System to be installed, creating a seal...



Step 3: Place the DSF Closure System over the motor, allowing the rubber motor seal to slip into place

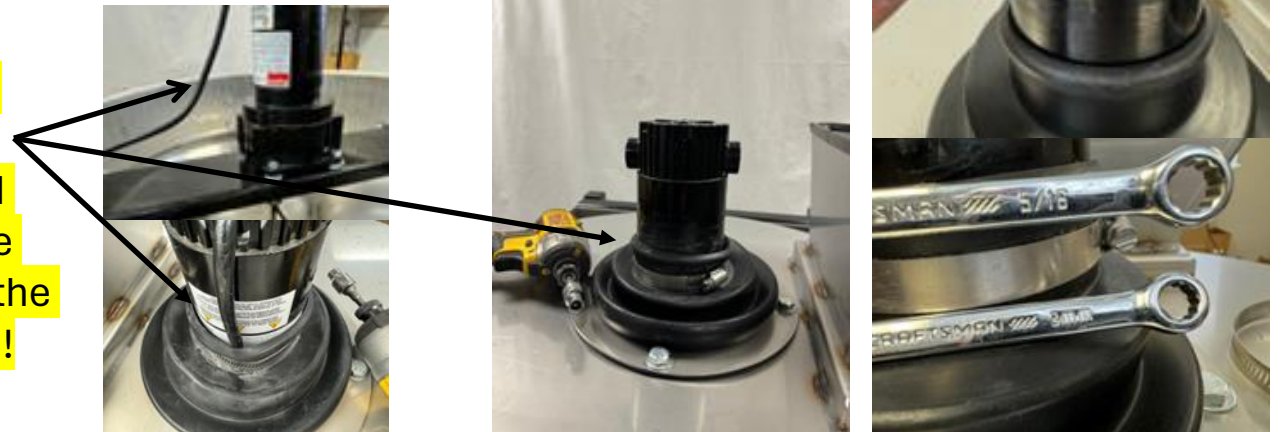
Pick up the Closure System, turning the funnel portion into position, keeping the cross bar that the motor sits on away from the opening for the Dry Seed Finisher to flow through... the funnel portion can sit on either side of the motor mounting bar.



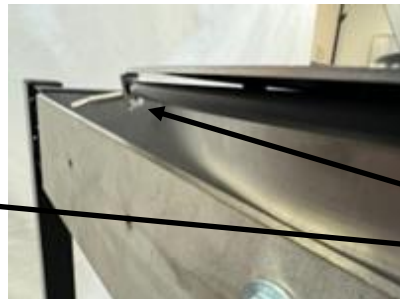
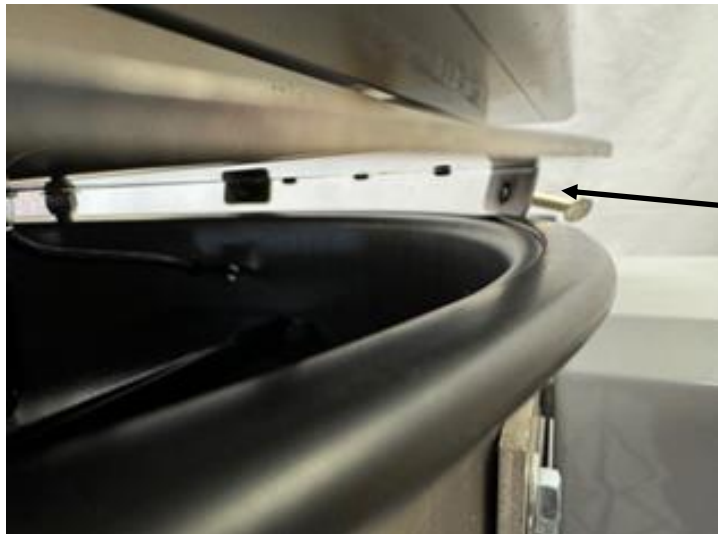
NOTE: The Rubber Motor Seal will slip OVER the Motor Top, moving around the two rounded motor casings, and then slide down along the motor casing.



CAUTION: The power cord coming from the control panel is SHORTER than we like. CAREFULLY PUSH as much of the cord through the round rubber gasket in the applicator base as possible, and don't over tighten the clamp – the Motor Seal works well!!!

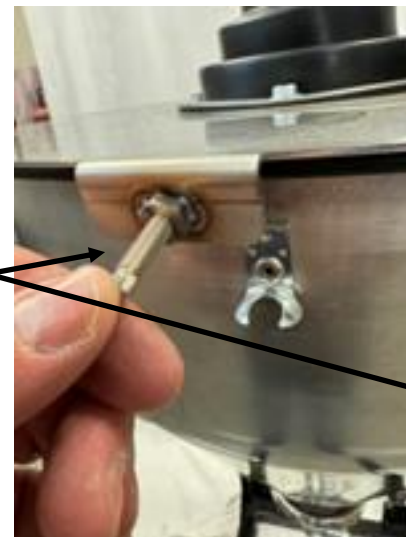


Steps 4 & 5: **Maneuver the Closure System over the Rubber Gasket**, being careful with the gasket. Move the 6 closure tabs down over the gasket, seating it firmly in place on the reservoir with gasket seal...



The closure tabs are designed to be at a slight angle to the base, allowing for a secure seal between base and closure. Feel free to bend them slightly so they move past the gasket and slip below the reservoir lip. Gasket integrity needs to be maintained for an optimum seal.

NEXT: Thumb screws (6) are found in the clear bag with the gasket and clamp. Install those **AFTER** the Closure is in place and the tabs can create a solid SEAL...



Finally, with the 6 thumb screws in place and tightened down, a SEAL is created. The Closure base should rest on the Reservoir Lip with the gasket in place, maintaining the Loading and Closure integrity and keeping You and Your Plant Clean!!!