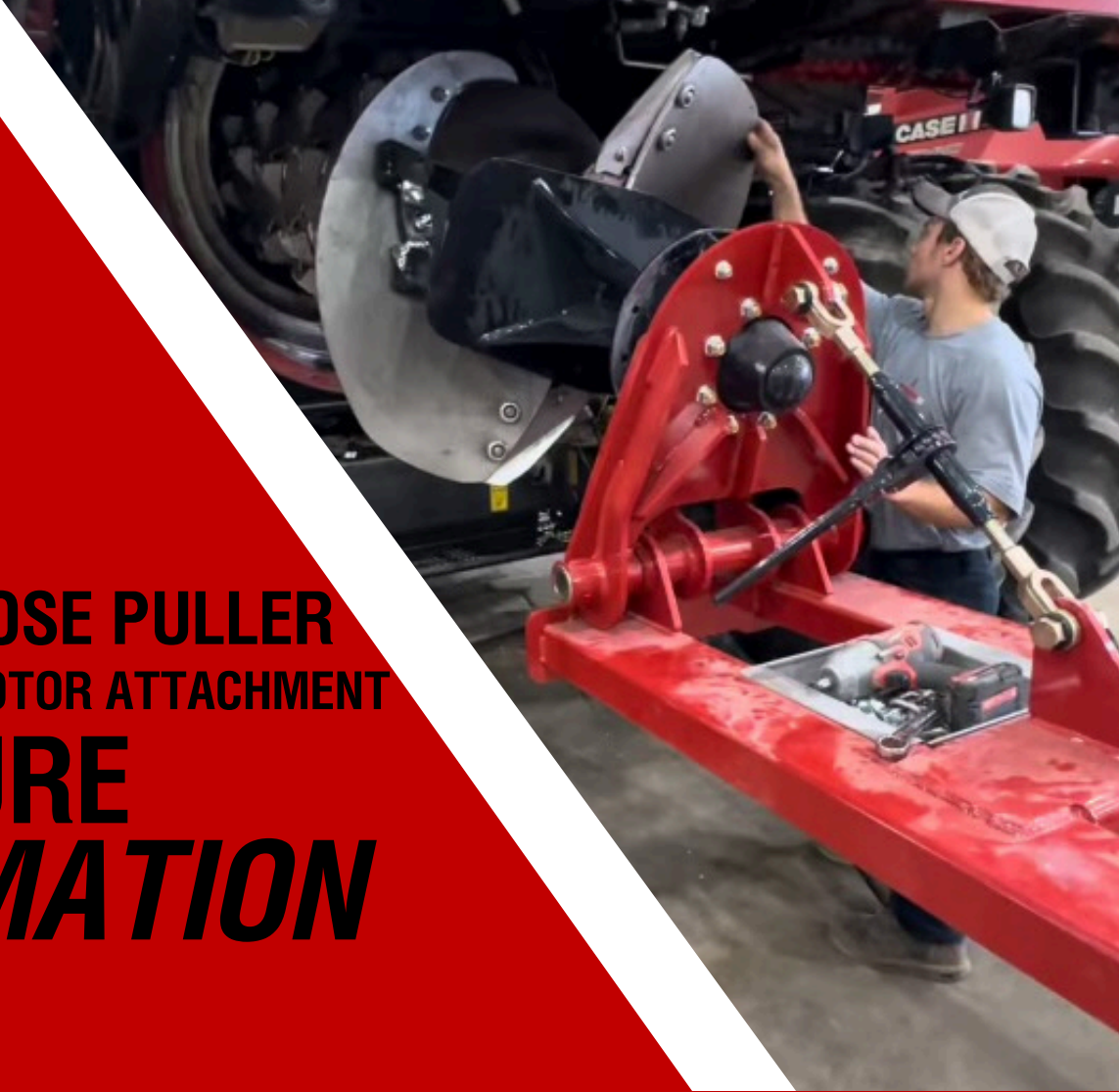


**CNH REMAN  
MULTI-PURPOSE PULLER  
WITH FLAGSHIP ROTOR ATTACHMENT  
BROCHURE  
INFORMATION**



**CNH** | REMAN

**IHLE FABRICATIONS LLC<sup>®</sup>**



**READ BEFORE USING**

**P/N: 73399799R**

**CNH Reman Multi-Purpose Puller  
with Flagship Rotor Attachment**



## PACKING LIST



1 - Stainless Steel Tray	6 - M16 x 2mm Bolt
1 - 3/8" Oval Connecting Link	6 - M16 x 2mm Nut
1 - 3/8" Grade 40 Chain (36")	18 - M16 Oversized Washer

---


## DISCLAIMER

The CNH Reman Multi-Purpose Puller is specifically designed for use in removing the parts that the attachments are designed for. The safe working load and weight limits are based on the intended use only. Use only with CNH Reman attachments.

### IMPORTANT:

- 1. Intended Use:** CNH Reman Multi-Purpose Puller is to be used exclusively for removing the specified parts that the attachments are designed for. The list of rotors for this puller are listed on the next page.
- 2. Misuse:** Any use of the CNH Reman Multi-Purpose Puller and specified attachments for purposes other than its intended use, including but not limited to, removing parts not specified in this manual is considered misuse and would impact the stated warranty.
- 3. Liability:** We are not liable for any damages, injuries, or losses that may occur if the attachment is used in a manner inconsistent with its intended purpose.

By using the CNH Reman Multi-Purpose Puller and any specified attachments, you acknowledge and agree to adhere to these guidelines and accept full responsibility for any consequences resulting from misuse.



## DESIGNED FOR USE WITH

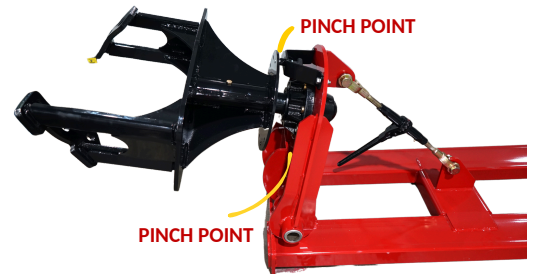
Part Numbers the CNH Reman Multi-Purpose Puller with Flagship Rotor Attachment is compatible with - CNH LARGE TUBE ROTORS

- 47825892 - Large Tube Rotor 76 Element
- 47825896 - Large Tube Rotor 76 Element ABR
- 47825899 - Large Tube Rotor 76 Element Rice
- 47825925 - Large Tube Rotor 76 Element Grain
- 47825940 - Large Tube Rotor 76 Element Grain ABR

## SAFETY PRECAUTIONS



1. Always inspect the CNH Reman Multi-Purpose Puller and any specified attachment before use to ensure it is in good working condition.
2. Follow all safety guidelines provided by the forklift manufacturer.
3. Use the specified attachment only for its intended purposes as outlined in this manual.
4. Never exceed the specified attachment's maximum weight capacity. Please follow the sheet metal plate on the CNH Reman Multi-Purpose Puller to see maximum working load.
5. Keep hands, feet, and loose clothing away from moving parts. **Note:** Pinch points are noted with danger sticker.
6. Never stand underneath the CNH Reman Multi-Purpose Puller, the Flagship Rotor Attachment or rotor.



## INSTALLATION - BEFORE USE

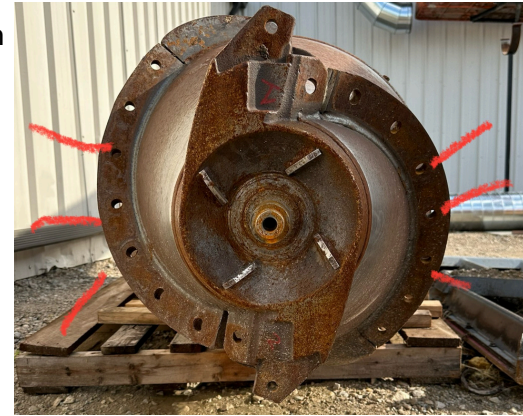
**NOTE: When the CNH Reman Multi-Purpose Puller with Flagship Rotor Attachment is received, it requires some final assembly that must be performed before use.**

1. Remove banding and packaging material. Remove hardware from bag.
2. Rotate the rotational plate upward.
3. Assemble binder and attach where needed. Tighten nut and compress split washer. The unit is now ready to be attached to the forklift.
4. Have the forklift on and in gear to hook up.
5. Align the CNH Reman Multi-Purpose Puller with the forklift's forks and secure it in place according to the manufacturer's instructions. There are threaded t-handles that screw into the fork pocket and clamp the puller to the forks. There is also a chain and link that **must** be wrapped around the forklift and secured.
6. Double-check the attachment is properly secured before operation of the CNH Reman Multi-Purpose Puller.

## OPERATION

**NOTE: The CNH Reman Multi-Purpose Puller with Flagship Rotor Attachment is designed to hook onto the rotor and remove it from the machine. It may be used to temporarily support the rotor (if it is attached to the fork lift) while repair/maintenance is performed on the rotor, but not for an extended period of time. The CNH Reman Multi-Purpose Puller with Flagship Rotor Attachment is absolutely not designed to transport the rotor any distance - especially - on an uneven surface. It is not designed to store or support the rotor for an extended period of time.**

### BOLT PLACEMENT



1. Familiarize yourself with the controls of the forklift and the CNH Reman Multi-Purpose Puller with Flagship Rotor Attachment.
2. Always lift and lower loads smoothly and evenly to prevent instability.
3. Avoid sudden movements or sharp turns when carrying loads.
4. Keep a safe distance from obstacles and other workers while operating the forklift.
5. Never use the CNH Reman Multi-Purpose Puller to lift people or allow anyone to ride on it.
6. Maneuver CNH Reman Multi-Purpose Puller with Flagship Rotor Attachment via forklift up to the face of the rotor as in line with the rotor as possible.
7. Use provided 16mm bolts with washers, to secure the attachment to the rotor. Some adjusting with the wheel hub as well as the binder may be needed to allow holes to line up. See photo for bolt placement. **Note:** If you decide to leave elephant ears on when pulling rotor, longer 3-1/2" bolts are needed.
8. Once nuts are loosely threaded onto bolts, use an impact or ratchet to securely fasten all 6 of the bolts.
9. Use the binder as well as the forklift to lift the rotor off the concaves and driving sprocket in the rear.
10. Slowly back out and let down the rotor as you go. Be mindful of wires and cab.
11. **DO NOT** run the forklift into combine cab.
12. Follow steps 11 to 1, reversing the order, to replace the rotor in the same manner it was removed.

## MAINTENANCE

1. Regularly inspect the CNH Reman Multi-Purpose Puller and any specified attachments for signs of wear or damage such as cracked welds, bent plates, faulty spring loaded plunger, etc.
2. Occasionally apply grease to wheel hub via grease zerk.
3. Keep the CNH Reman Multi-Purpose Puller and any specified attachments clean and free of debris.
4. Inspect bolts, nuts and washers before use. Replace if bent, stripped threads, etc.
5. If any issues arise during operation, cease use immediately and consult a qualified technician for repairs.

For help, call 515-329-8050.

## STORAGE

When not in use, store the CNH Reman Multi-Purpose Puller and any specified attachments in a dry, secure location away from extreme temperatures.

If storing outdoors, cover with a tarp to protect it from the elements.

## TROUBLESHOOTING

**NOTE: If you encounter any difficulties or have questions about the CNH Reman Multi-Purpose Puller with Flagship Rotor Attachment, refer to the troubleshooting section of this manual or contact the manufacturer for assistance at 515-329-8050.**

**Q: What if my plate is not flush with the rotor?**

A: Use the rotating wheel hub as well as the chain binder to position the Flagship Rotor Attachment correctly/flush to the rotor flights.

**Q: What if my Flagship Rotor Attachment won't spin?**

A: Double check that your spring loaded plunger is engaged. Does it look damaged? If so, call 515-329-8050 for a new one.

**Q: What if the holes on my rotor won't line up to the Flagship Rotor Attachment?**

A: Check you are using the correct holes - this rotor attaches to the center 3 holes of the flight. See the photo in the operation section. Check you are using the correct attachment for the correct rotor.

## DISCLAIMER

**Neither CNH Reman LLC nor the manufacturer are responsible for any accidents or injuries resulting from improper use or maintenance of the forklift attachment. Always prioritize safety and follow the guidelines outlined in this manual.**

